

Trail Key:

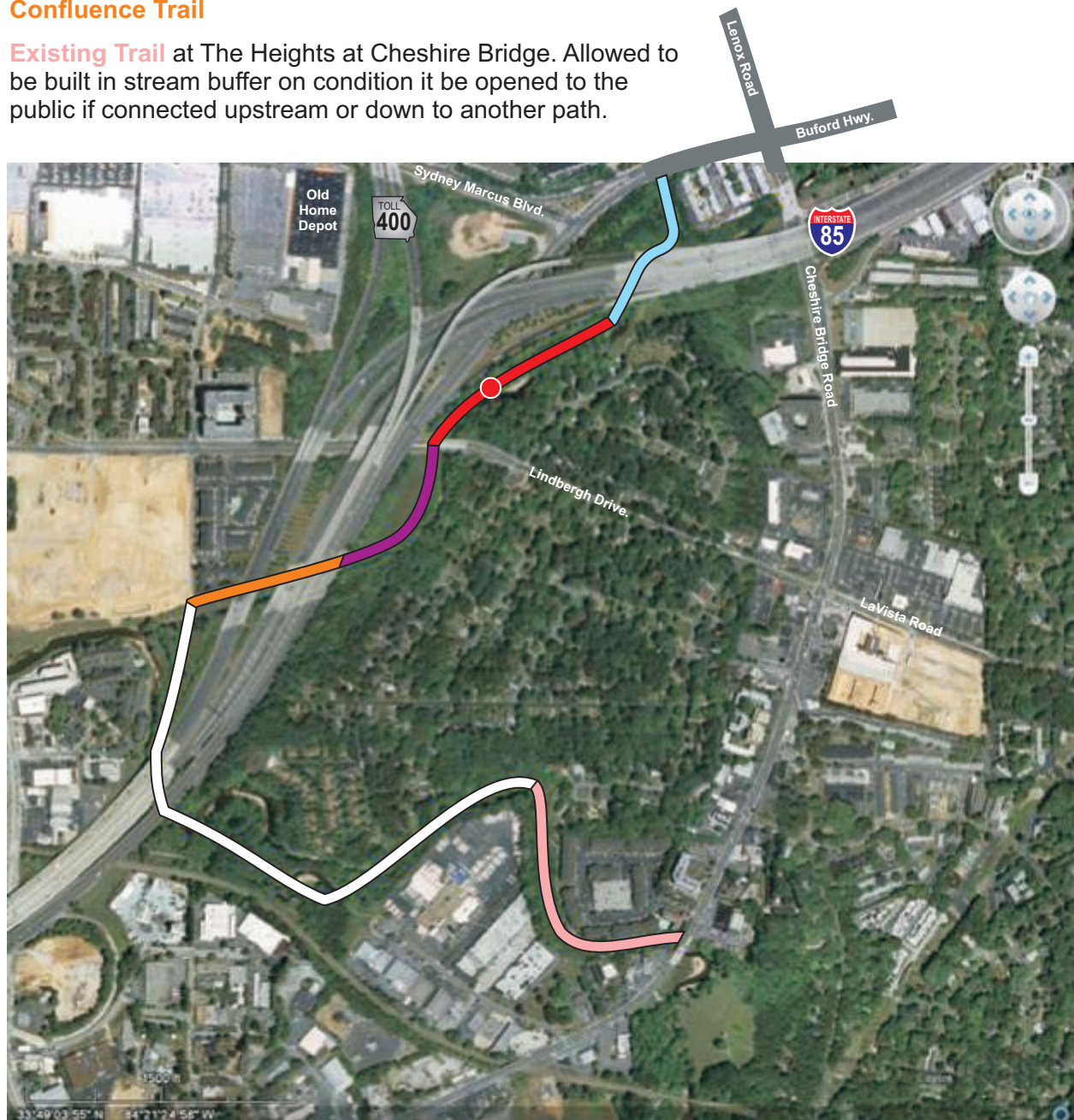
Starting upper right: **The Cavern Trail**

Creekside Trail, with crossing at **Red Circle**

The Meadows Loop

Confluence Trail

Existing Trail at The Heights at Cheshire Bridge. Allowed to be built in stream buffer on condition it be opened to the public if connected upstream or down to another path.



Cavern Trail: First need is Security. Then greatest need is moving boulders, smoothing & widening existing dirt trail.

Creekside Trail: Heavy kudzu removal required. Trail along existing fence best site. Forest cover attractive once invasives removed. Possible to leave as mulch path. Crossing offers two options. A suspension bridge would make for easy crossing, but expensive. A ford with lily pad steps would involve cutting steps into the sandy bank to get to the water. Legal clearance for left bank property access downstream to Lindbergh Drive.

The Meadow Loop: Wide, open easy trail building, with plenty of drainage in well-mounded path. Four foot wide swath of crusher run, inside ten foot cleared opening, looping around the meadow. Needs cinder block inside guard rail for ease of crossing.

Confluence Trail: Two choices for footing across heavy rip rap burden under bridges. A short-term solution, +/- 15 years, is truckloads of rock with sand on top to fill in gaps in rocks. Longer term, a suspension bridge over the rocks, anchored on either end by supports placed from crane above on highway. Also heavy kudzu removal at downstream end.